

Research Bulletin KTC-06-18

Development of a Traffic Sign Inventory System (Sign Click)

Issued 11/06

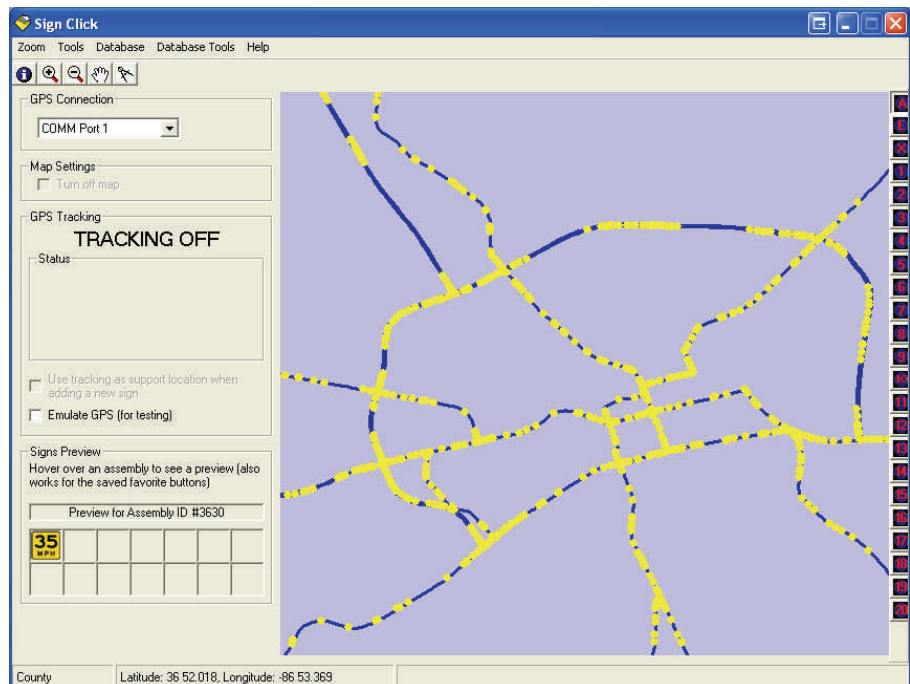
Information was extracted from Research Report KTC-06-18/SPR318-06-1F published in July 2006. The principal investigator was Eric R. Green. The Study Advisory Committee Chair was Donald Smith.

Objectives: The objective of this study is to develop a software package, entitled, Sign Click. A sign inventory data base would be beneficial for maintenance and management of signs. The overall safety provided the driving public could benefit from an efficient inventory system that increases an agency's knowledge of existing signs. In addition, a comprehensive inventory and mechanisms for updating the inventory could reduce the potential for liability associated with outdated, inappropriately placed, or missing signs. It is intended that the sign inventory system will serve as the model for expansion to a statewide inventory and management system for signs.

Description: Sign Click is a program developed by the Kentucky Transportation Center to create and maintain a highway sign database. The program allows a user to click on a point on the map and add a sign assembly and various details about the assembly. The program will automatically calculate the roadway location (in county, route and milepoint format), give GPS location, and determine the street address. The user can add, delete and edit existing sign assemblies.

Key Features:

- Sign locations are inventoried based on county, route and milepoint as well as GPS coordinates
- The inventory is stored spatially in a shapefile as well in a DBASE file
- When a location is selected the user enters specific details about the assembly and then has the option to add several MUTCD signs
- Every MUTCD standard sign is contained in a searchable database including a preview image
- The user can save up to 20 "favorite" assemblies to avoid having to recreate popular or complex sign assemblies



The main window shows sign locations on a map. The user can click on a sign to edit it or add or delete signs.

The sign assembly form details the location of the sign assembly. From here the user can add multiple signs to the same assembly.

- The full report is available at http://www.ktc.uky.edu/report_abstracts/Recent/ktc_06_18.htm.
- The program can be downloaded from <http://www.ktc.uky.edu/SignClick>
- A GPS unit and data cable are recommended but not necessary to use the program
- Suggested GPS units include both Magellen SporTrak and Magellen 315.

The sign form is preloaded with nearly all MUTCD signs, each with a picture preview. A T-code is shown if available as well.

For more information contact Eric Green at egreen@engr.uky.edu or (859) 257-2680 or visit www.ktc.uky.edu/SignClick



Kentucky Transportation Center
 University of Kentucky
 176 Oliver Raymond Building
 Lexington, Kentucky 40506-0218
 voice (859) 257-4513
 fax (859) 257-1815